

Areas to investigate

KS2 progress

- Progress in reading and mathematics was significantly below average and in the lowest 10%.

KS2 attainment

- There were no meaningful trends or differences for this measure.

KS1 attainment

- There were no meaningful trends or differences for this measure.

Phonics in 2018

- There were no meaningful trends or differences for this measure.

EYFS

- There were no meaningful trends or differences for this measure.

Behaviour

- In 2017/18, the rate of overall absence (4.70%) was above the national average for schools with a similar level of deprivation (3.47%).
- There were no permanent exclusions in the last three years. The national average in each of these years was zero.
- In 2016/17, there were no fixed term exclusions. The national average rate for schools with a similar level of deprivation was 0.27%. In 2016/17, there were no repeat exclusions. The national average rate for schools with a similar level of deprivation was 0.13%.

Primary school context in 2018

Phase of education: Primary

Headteacher: James Procter

Pupils: 125

Gender: Mixed

Deprivation Quintile: Lowest 20% (0.1)

Local authority: East Sussex

Admissions policy: Not applicable

Ages: 2-11

Denomination: Church of England

Special needs provision:

Ever 6 FSM %: 15.7

English additional language %: 1.2

SEN support %: 6.4

SEN with EHC plan %: 0.8

Ethnicity

- The largest ethnic groups are: White - British (91.9%), White - Romany or Gypsy (3.5%), White - any other White background (3.5%), Mixed - White & Asian (1.2%).
- This school has 4 out of 17 possible ethnic groups. The average number of groups for this phase of education is 9.

Number on roll

- The school was in the lowest 20% of all schools for the number of pupils (125).

Girls

- The percentage of girls in year 3 (75%) was higher than all other year groups.

Disadvantaged

- The percentage of FSM in year 4 (30%) was higher than all other year groups.
- The percentage of FSM in year 5 (6%) was lower than all other year groups.
- There was a larger than average decrease in the percentage of disadvantaged pupils between 2017 and 2018.
- There were no children looked after in the school.

Notes: Context sentences provide background information for inspectors. This is historic data for pupils as of the January 2018 census. For example year 10 in 2018 is the school's current year 11 cohort. Ethnicity and CLA sentences appear for every school. For further information on methodology see www.gov.uk/government/collections/using-ofsted-inspection-dashboard

Primary school context 2018

English as an Additional Language

- The school was in the lowest 20% of all schools for the proportion of EAL (1.2%).

Special Educational Needs

- The school was in the lowest 20% of all schools for the proportion of SEN support (6.4%).
- The percentage of SEN in year 2 (23%) and year 3 (19%) was higher than all other year groups.
- The percentage of SEN in year 1 (0%) and year 5 (0%) was lower than all other year groups.

Prior Attainment

- Pupil prior attainment was well above the national comparator for the following: Reading (year 3, year 5, year 6), Writing (year 1, year 3, year 4, year 5), Mathematics (year 3, year 4, year 5, year 6)

Relative progress for the past three years

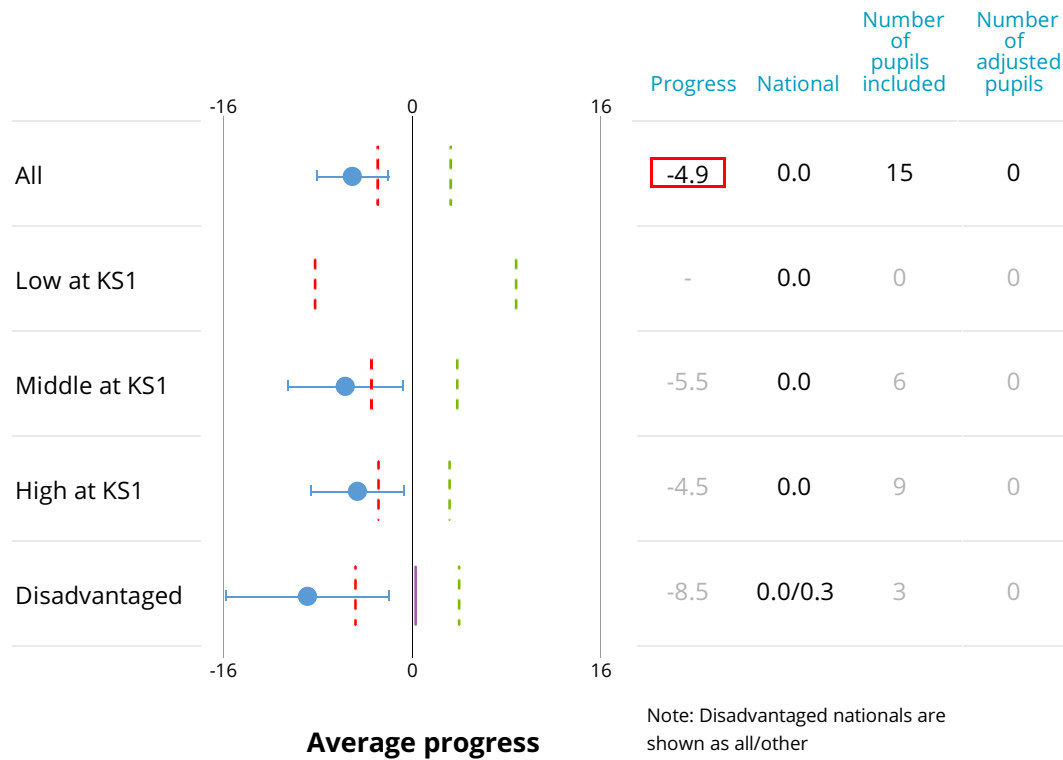
Progress quintiles based on rank of progress score

() Cohort Significantly above national Significantly below national

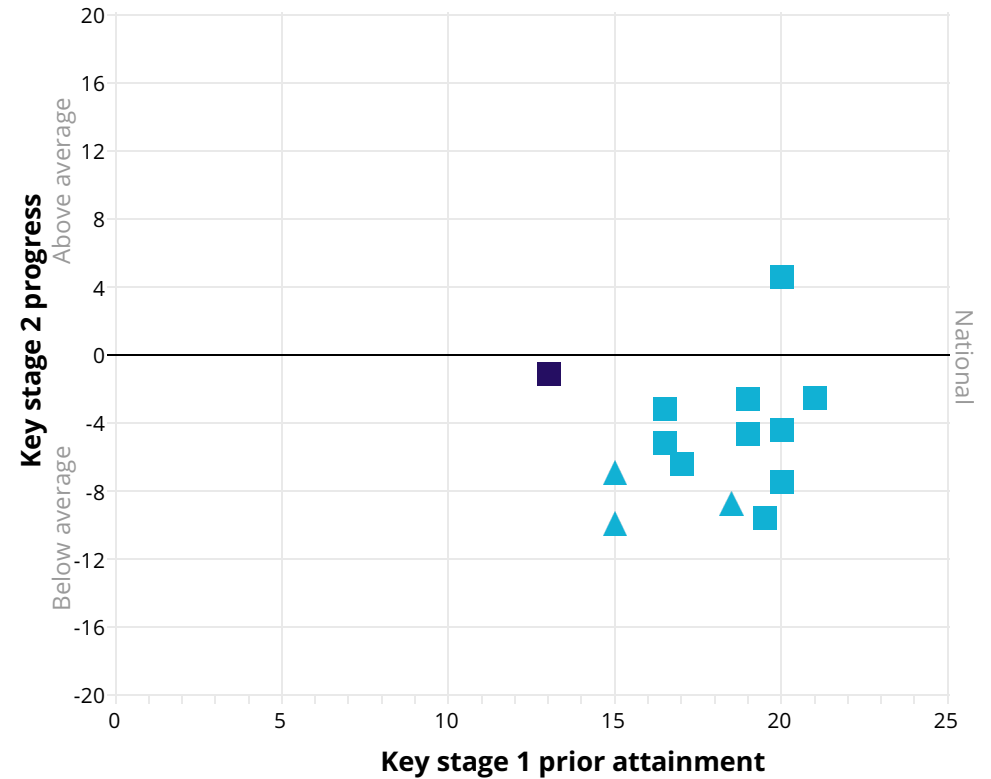
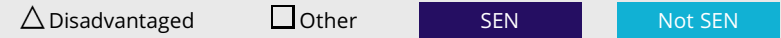
			Reading					Writing					Mathematics						
			Bottom 20%					Bottom 20%					Bottom 20%						
			Q5	Q4	Q3	Q2	Q1	Q5	Q4	Q3	Q2	Q1	Q5	Q4	Q3	Q2	Q1		
Overall	2016	(14)						(14)						(14)					
	2017	(12)						(12)						(12)					
	2018	(15)						(15)						(15)					
Low at KS1	2016	(3)						(3)						(3)					
	2017	(1)						(1)						(1)					
	2018	(0)						(0)						(0)					
Middle at KS1	2016	(8)						(8)						(8)					
	2017	(8)						(8)						(8)					
	2018	(6)						(6)						(6)					
High at KS1	2016	(3)						(3)						(3)					
	2017	(3)						(3)						(3)					
	2018	(9)						(9)						(9)					
Disadvantaged	2016	(3)						(3)						(3)					
	2017	(6)						(6)						(6)					
	2018	(3)						(3)						(3)					

Notes: Statistical significance for disadvantaged pupils is against the national for other pupils. Change in methodology or calculations is indicated by a dotted line. Quintiles for 2018 are based on adjusted progress scores. Previous years are based on unadjusted. Significance is only flagged for cohorts greater than 10. For cohorts of 10 or fewer, information is greyed out. For further information on methodology see www.gov.uk/government/collections/using-ofsteds-inspection-dashboard

Reading progress in 2018



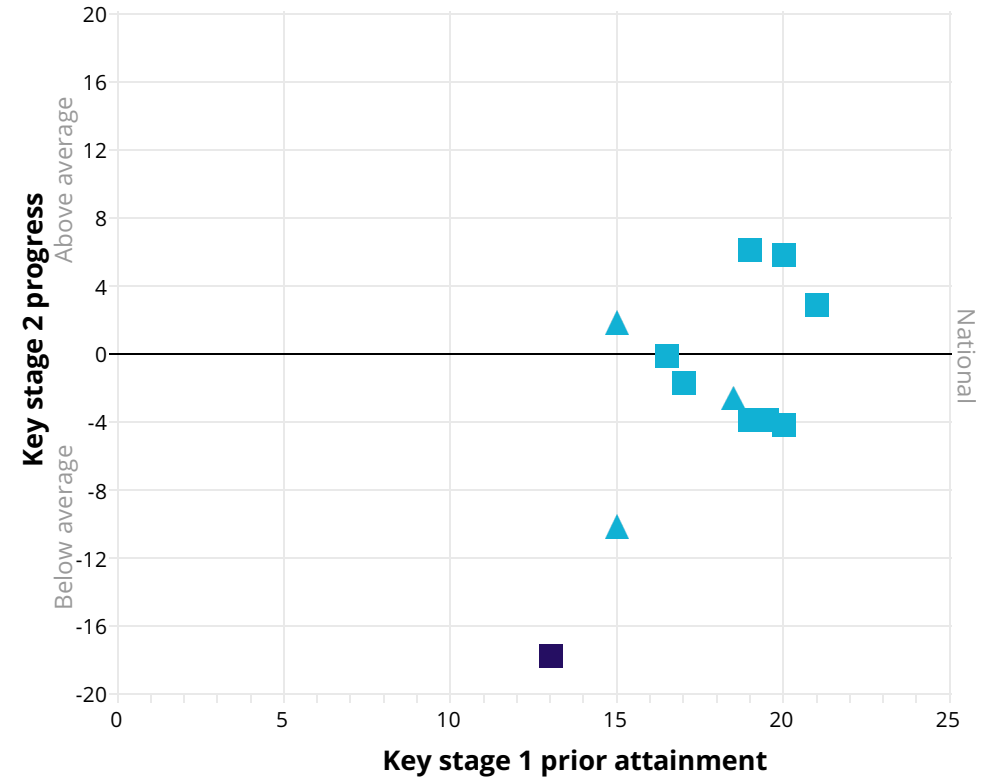
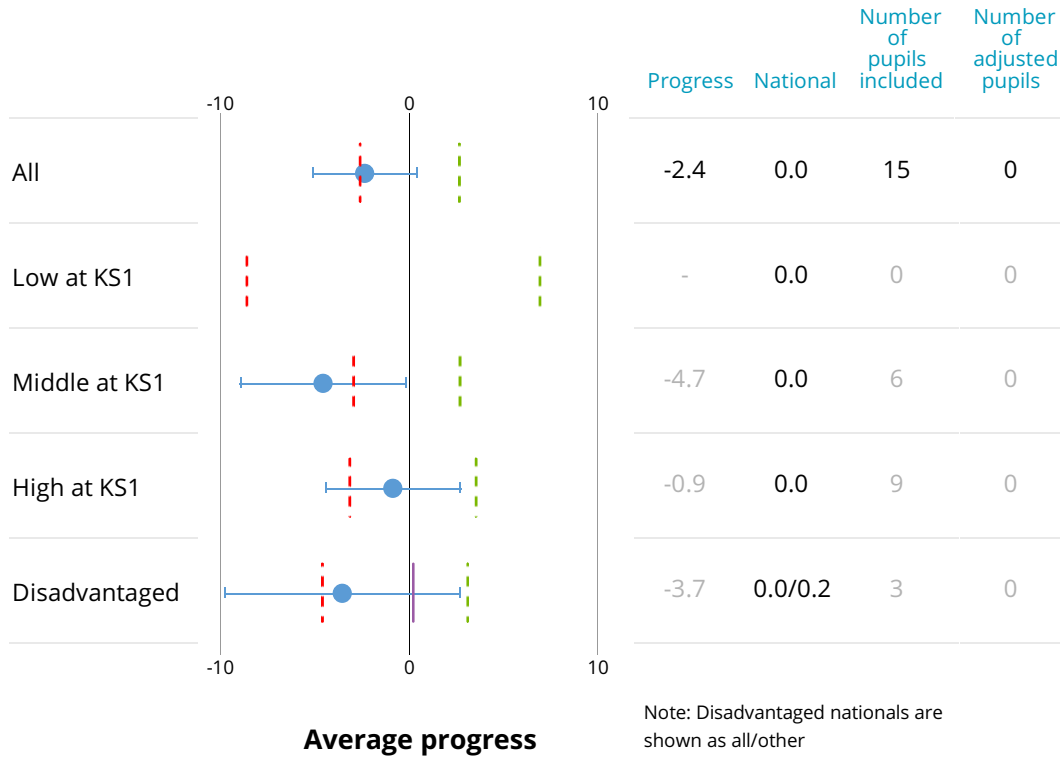
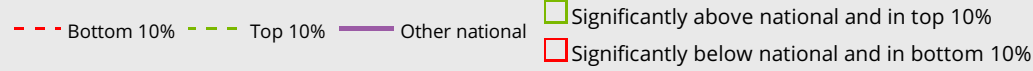
Reading progress scatterplot



Notes: Progress measures are based on adjusted progress scores. Significance is only flagged for cohorts greater than 10. For cohorts of 10 or fewer, information is shown in grey. Prior attainment is based on overall KS1 attainment. For further information on methodology see www.gov.uk/government/collections/using-ofsteds-inspection-dashboard

Writing progress in 2018

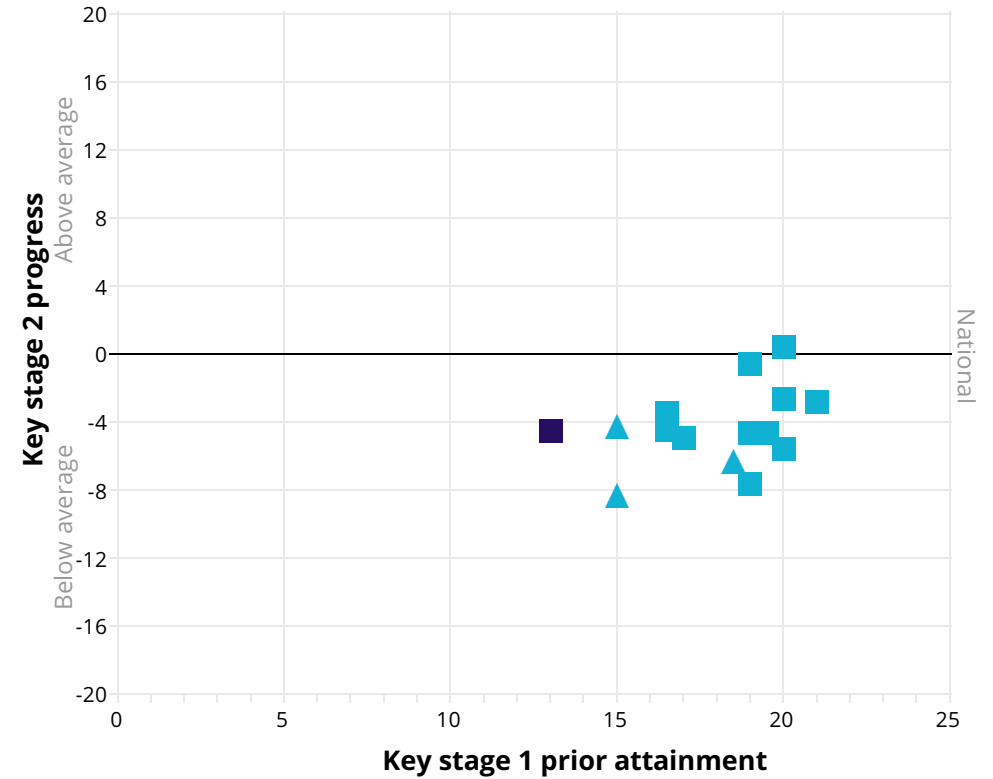
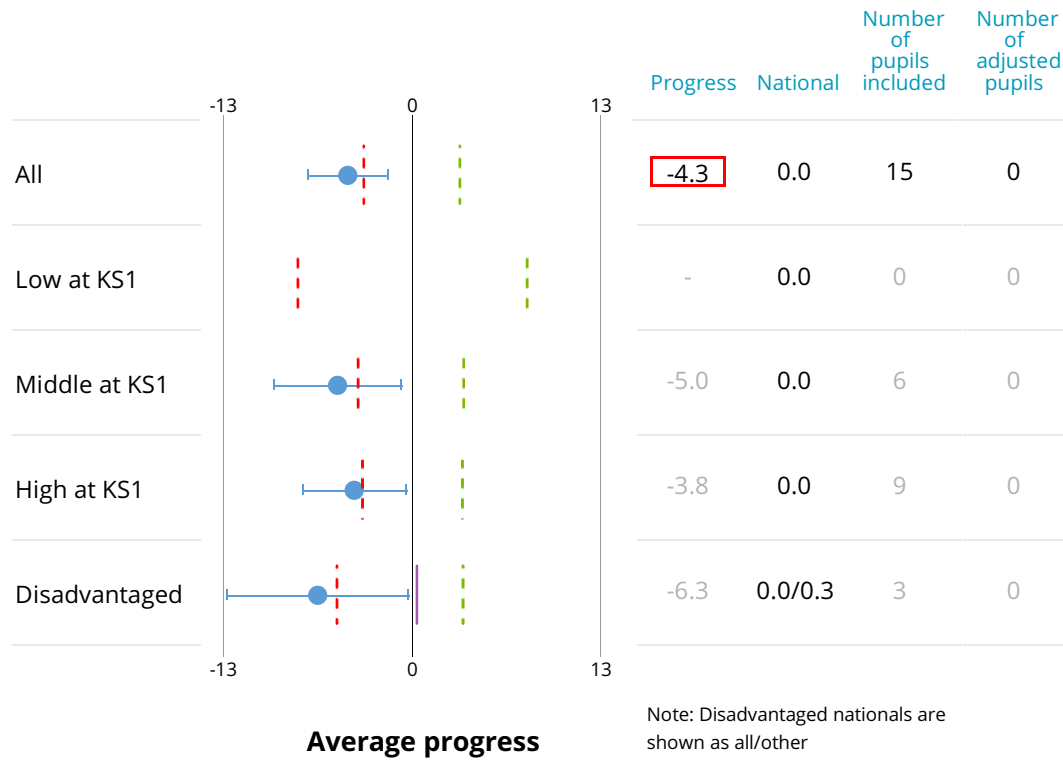
Writing progress scatterplot



Notes: Progress measures are based on adjusted progress scores. Significance is only flagged for cohorts greater than 10. For cohorts of 10 or fewer, information is shown in grey. Prior attainment is based on overall KS1 attainment. For further information on methodology see www.gov.uk/government/collections/using-ofsteds-inspection-dashboard

Mathematics progress in 2018

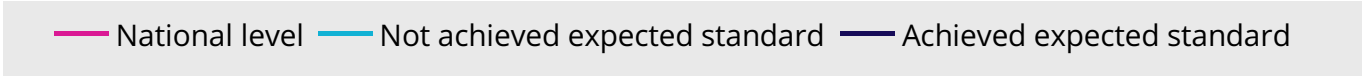
Mathematics progress scatterplot



Notes: Progress measures are based on adjusted progress scores. Significance is only flagged for cohorts greater than 10. For cohorts of 10 or fewer, information is shown in grey. Prior attainment is based on overall KS1 attainment. For further information on methodology see www.gov.uk/government/collections/using-ofsteds-inspection-dashboard

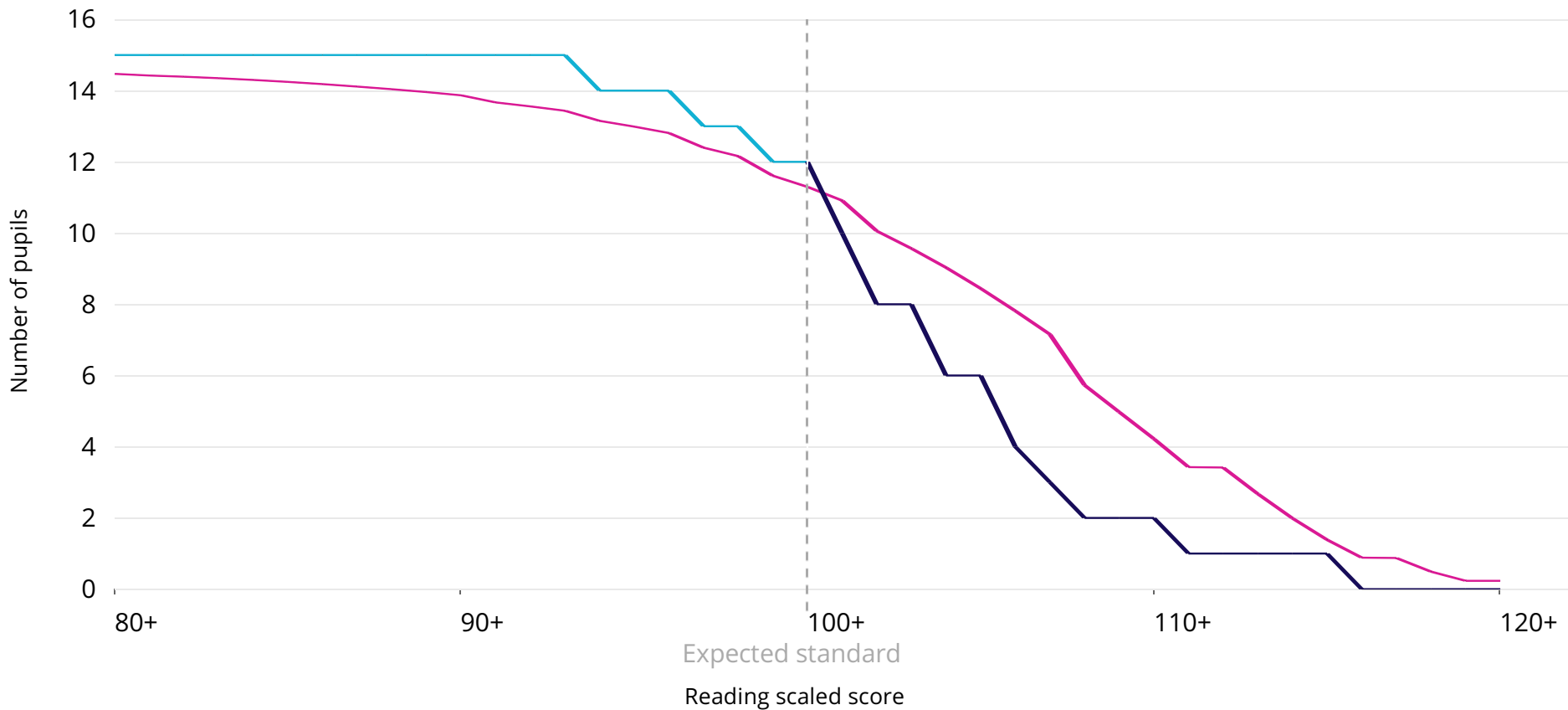
Reading scaled scores 2018

This chart shows the distribution of total marks achieved by pupils in the school compared to the national.



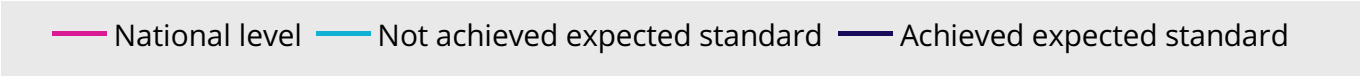
Cohort = 15 One pupil relates to 6.7 percentage points.

In 2018, 80% of pupils achieved the expected standard, 5 percentage points above the national. This difference was not statistically significant.



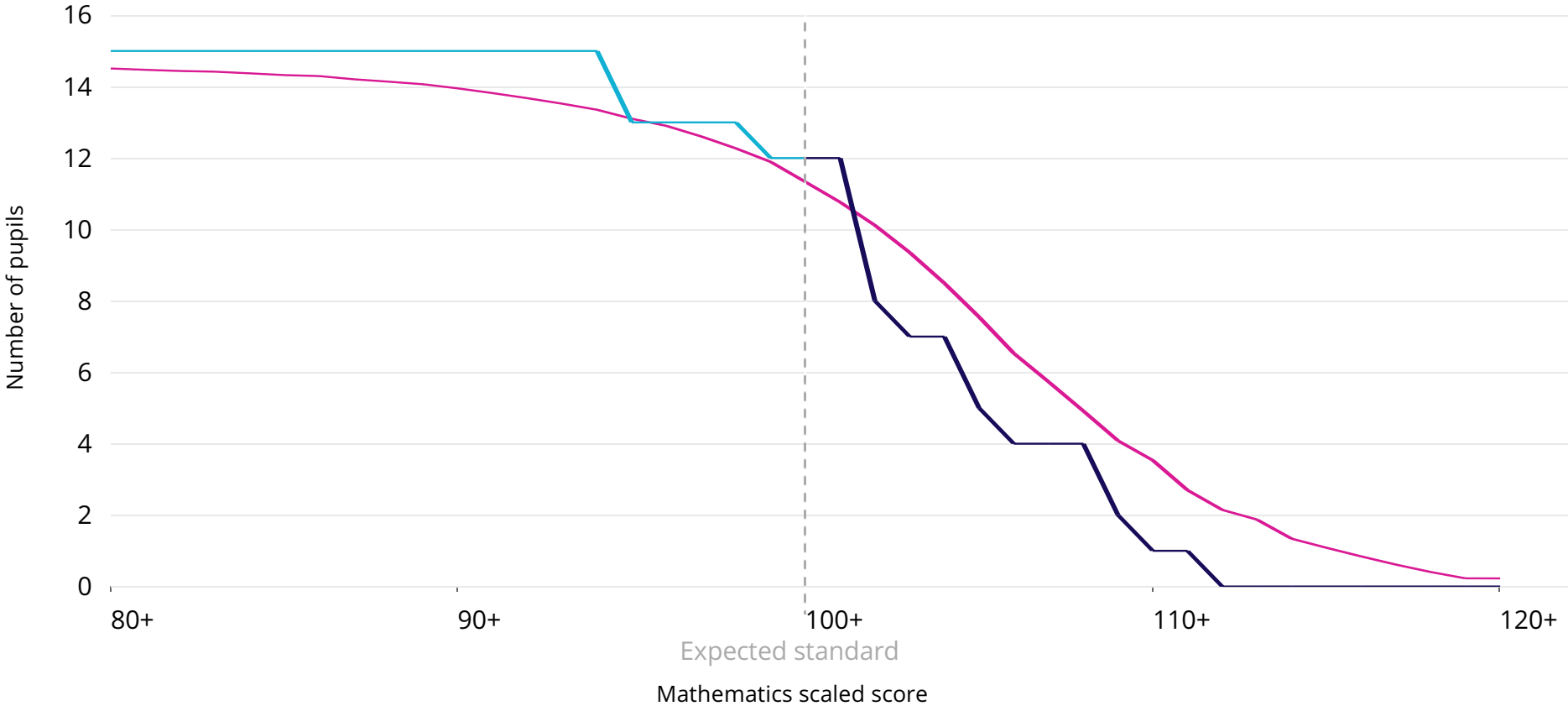
Mathematics scaled scores 2018

This chart shows the distribution of total marks achieved by pupils in the school compared to the national.



Cohort = 15 One pupil relates to 6.7 percentage points.

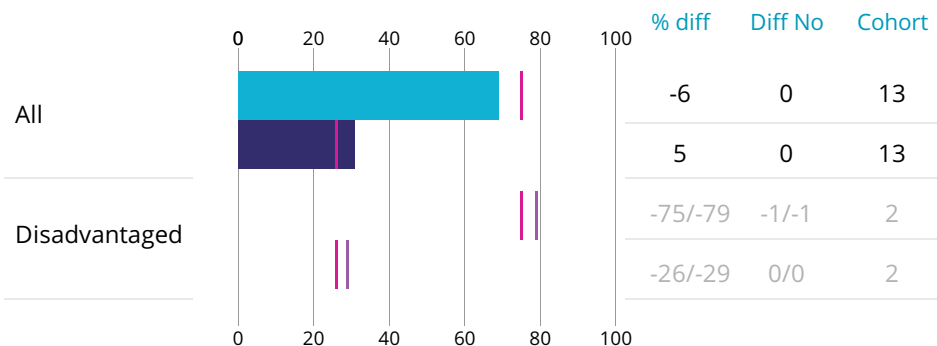
In 2018, 80% of pupils achieved the expected standard, 4 percentage points above the national. This difference was not statistically significant.



Notes: The plotted national line is the national mathematics percentage multiplied by the school mathematics attainment cohort at each average scaled score interval. For further information on methodology see www.gov.uk/government/collections/using-ofsteds-inspection-dashboard

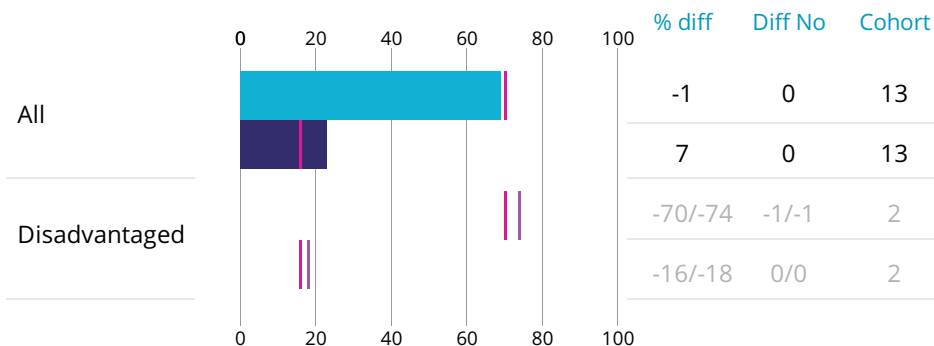
Reading

Expected+ % Greater depth % National for all pupils Other national



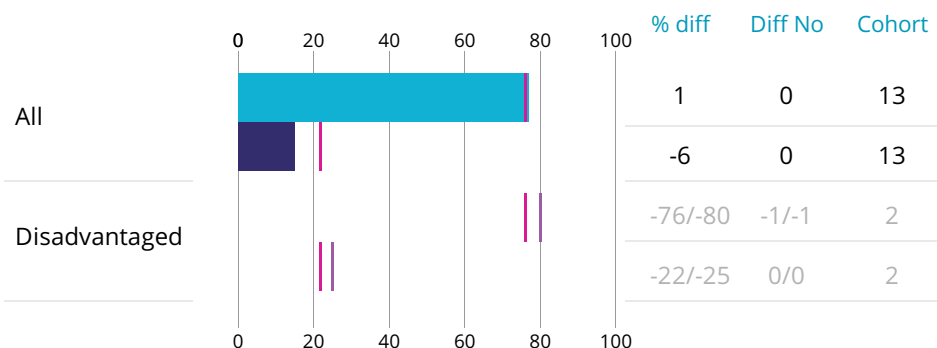
Writing

Expected+ % Greater depth % National for all pupils Other national



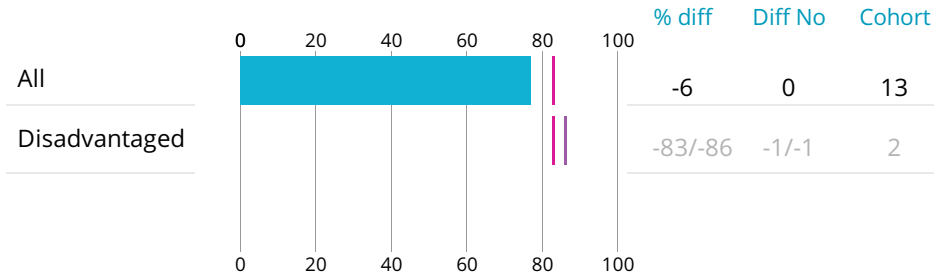
Mathematics

Expected+ % Greater depth % National for all pupils Other national



Science

Expected+ % National for all pupils Other national



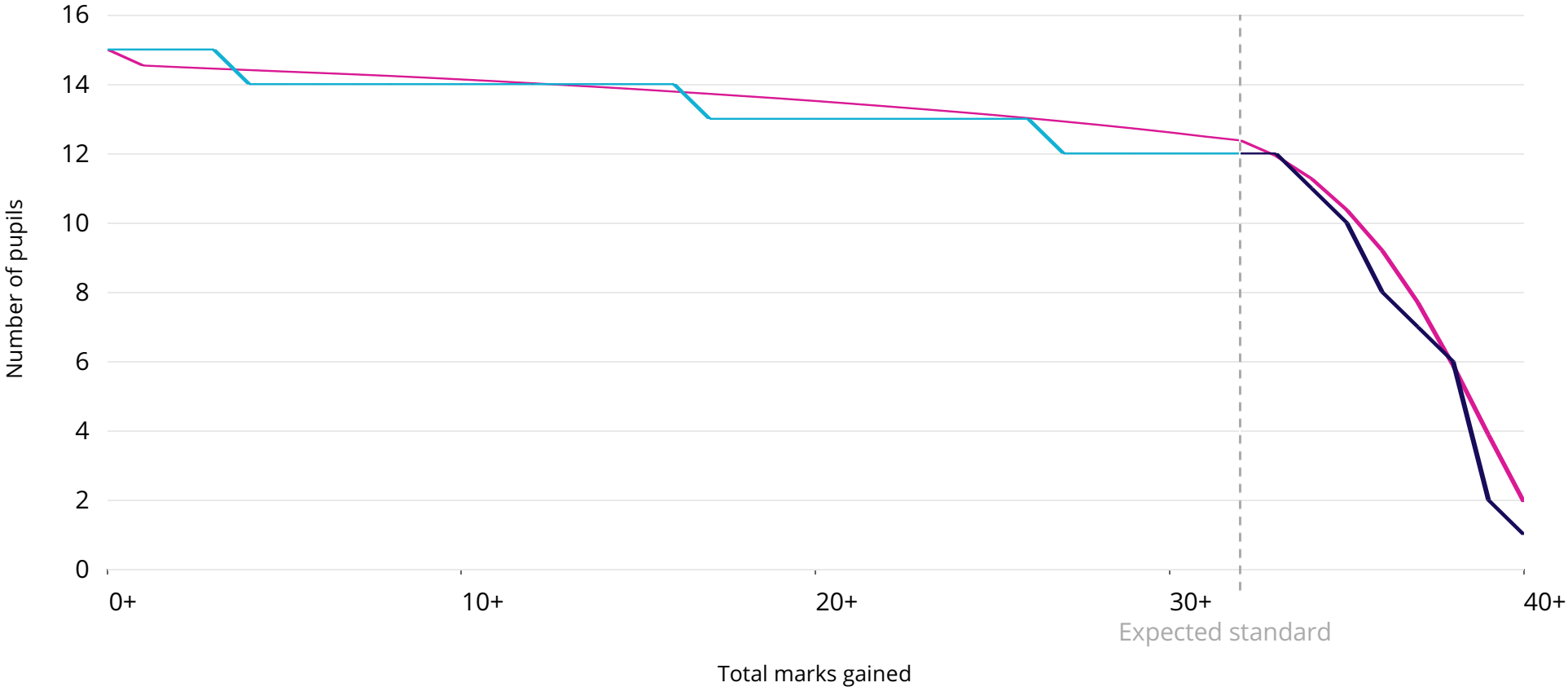
Year 1 phonics marks 2018

This chart shows the distribution of total marks achieved by pupils in the school compared to the national.

— National level
 — Not achieved expected standard
 — Achieved expected standard

Cohort = 15 One pupil relates to 6.7 percentage points.

In 2018, 80% of pupils achieved the expected standard, 3 percentage points below the national proportion. This difference was not statistically significant.



Notes: The plotted national line is the national phonics attainment percentage at each phonics mark multiplied by the whole school phonics attainment cohort. The expected standard for phonics is 32+. For further information on methodology see www.gov.uk/government/collections/using-ofsted-inspection-dashboard